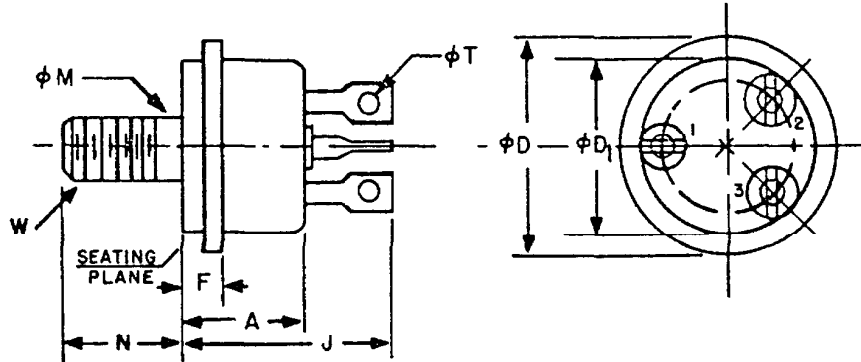


TO-10



SYMBOL	INCHES		MILLIMETERS		NOTES
	MIN.	MAX.	MIN.	MAX.	
A	.290	.440	7.37	11.18	
ϕD		.650		16.51	
ϕD_1	.410	.560	10.41	14.22	
F	.060	.330	1.52	8.38	
J		.650		16.51	
ϕM	.163	.189	4.14	4.80	3
N	.335	.375	8.51	9.53	
ϕT	.040		1.02		1
W					2, 3

NOTES:

1. ANGULAR ORIENTATION OF INDIVIDUAL SOLDERED TERMINALS IS UNDEFINED.
2. 10-32 UNF-2A. MAXIMUM PITCH DIAMETER OF PLATED THREADS SHALL BE BASIC PITCH DIAMETER .1697" (4.31 MM) REFERENCE (SCREW THREAD STANDARDS FOR FEDERAL SERVICES 1957) HANDBOOK H28 1957 P1.
3. COMPLETE THREADS SHALL EXTEND TO WITHIN 2-1/2 THREADS OF THE SEATING PLANE.

THIS OUTLINE DOES NOT MEET THE MINIMUM CRITERIA ESTABLISHED BY JS-10 FOR REGISTRATION.

4.6.5