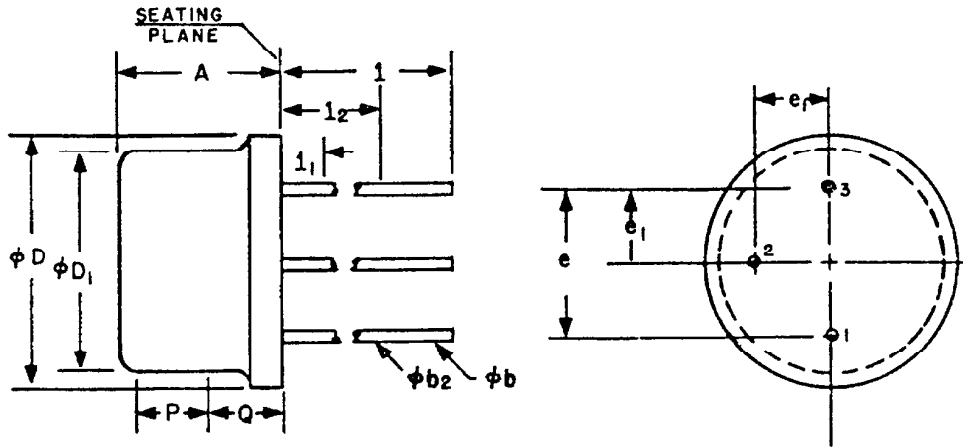


T0-9



SYMBOL	INCHES		MILLIMETERS		NOTES
	MIN.	MAX.	MIN.	MAX.	
A	.200	.260	5.08	6.60	
$\phi b$	.016	.021	.406	.533	2
$\phi b_2$	.016	.019	.406	.483	2
$\phi D$	.290	.370	7.37	9.40	
$\phi D_1$	.275	.335	6.99	8.51	
e	.200 T.P.		5.08 T.P.		3
$e_1$	.100 T.P.		2.54 T.P.		
1	.500		12.70		
$1_1$		.050		1.27	
$1_2$	.250		6.35		
P	.065		1.65		1
Q		.155		3.94	4

NOTES:

1. THE VARIATION IN ACTUAL DIAMETER WITHIN THIS ZONE SHALL NOT EXCEED .010" (.254 MM).
2. (THREE LEADS)  $\phi b_2$  APPLIES BETWEEN  $1_1$  AND  $1_2$ .  $\phi b$  APPLIES BETWEEN  $1_2$  AND .5" (12.70 MM) FROM SEATING PLANE. DIAMETER IS UNCONTROLLED IN  $1_1$  AND BEYOND .5" (12.70 MM) FROM SEATING PLANE.
3. LEADS HAVING A MAXIMUM DIAMETER .019" (.483 MM) MEASURED IN A GAGING PLANE OF .054" (1.37 MM) + .001" (.025 MM) - .000" (.000 MM) BELOW THE SEATING PLANE OF THE DEVICE SHALL BE WITHIN .007" (1.78 MM) OF THEIR TRUE POSITIONS (T.P.).
4. DETAILS OF OUTLINE IN THIS ZONE OPTIONAL.