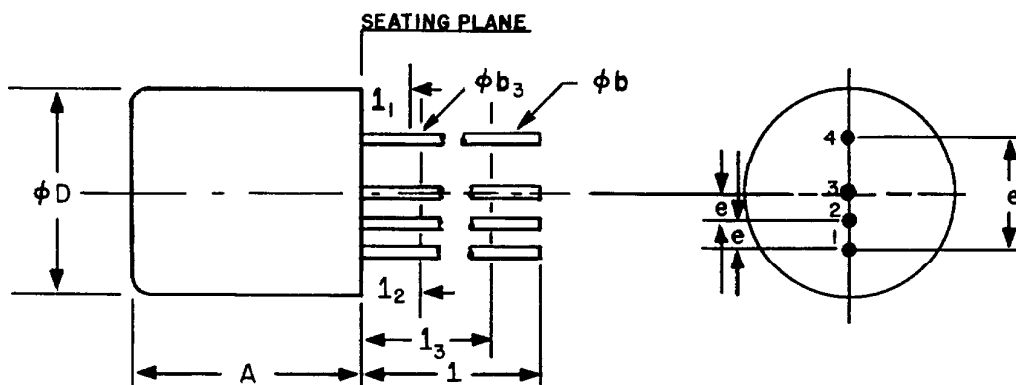


TO-7



SYMBOL	INCHES		MILLIMETERS		NOTES
	MIN.	MAX.	MIN.	MAX.	
A		.375		9.53	
ϕb	.016	.021	.406	.533	2
ϕb_3	.016	.019	.406	.483	2
ϕD		.360		9.14	
e	.041	.055	1.04	1.40	
e_1	.185	.199	4.70	5.05	
1	1.500		38.10		
1_1		.050		1.27	2
1_2		.080		2.03	1, 2
1_3	.250		6.35		2

NOTES:

1. EXTERNALLY COATED DEVICES SHALL NOT HAVE COATING ON THE LEADS BEYOND THIS ZONE.
2. (FOUR LEADS) ϕb_3 APPLIES BETWEEN 1_1 AND 1_3 . ϕb APPLIES BETWEEN 1_3 AND 1.5" (38.10 MM) FROM SEATING PLANE. DIAMETER IS UNCONTROLLED IN 1_1 AND BEYOND 1.5" (38.10 MM) FROM SEATING PLANE.

THIS OUTLINE DOES NOT MEET THE MINIMUM CRITERIA ESTABLISHED BY JS-10 FOR REGISTRATION.