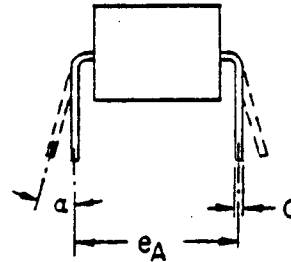
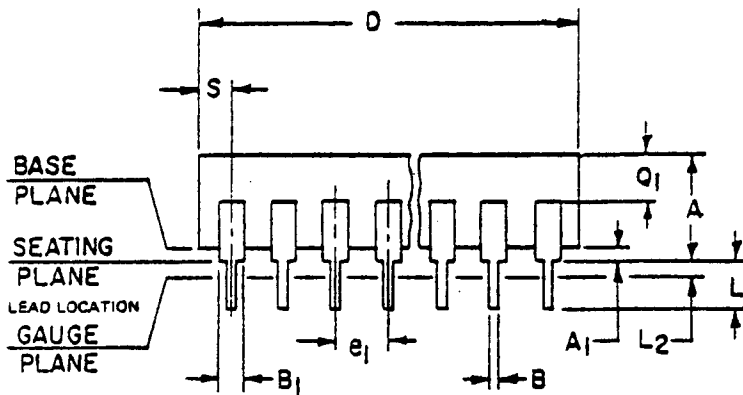


NOTES :

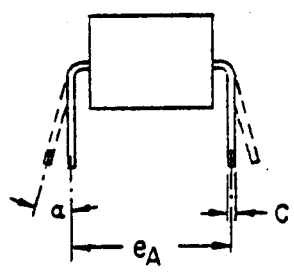
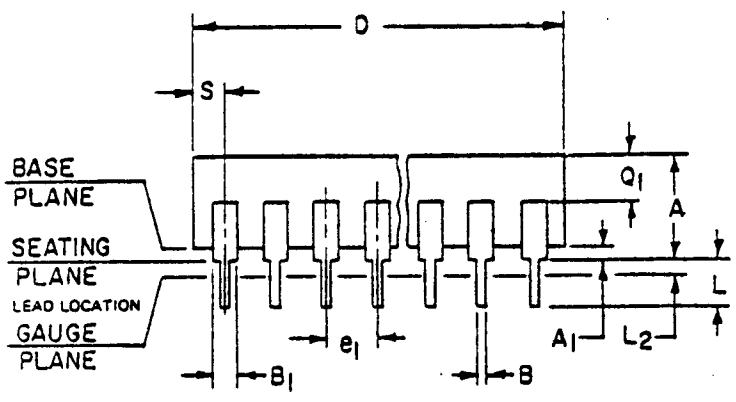
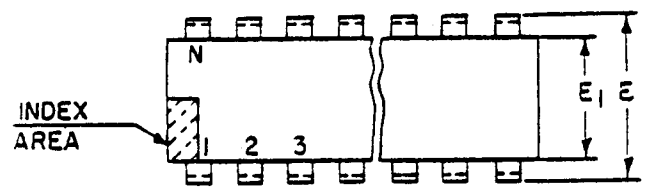
1. Refer to applicable symbol list.
2. Dimensioning and tolerancing per ANSI Y14.5-1973.
3. Leads within .127 radius of True Position (TP) at gauge plane with maximum material condition and unit installed.
4. e_1 and e_A applies in zone L_2 when unit installed.
5. α applies to spread leads prior to installation.
6. N is the maximum quantity of lead positions.
7. N_1 is the allowable quantity of missing leads.
8. E_1 does not include mold flash.
9. Outlines on which the seating plane is coincident with the base plane ($A_1 = 0$) terminal lead stand-offs are not required, and B_1 may equal B along any part of the lead above the seating/base plane.
10. Controlling Dimension: INCH



SYMBOL	VARIATIONS (ALL DIMENSIONS IN MILLIMETERS)											
	AA		NOTE	AB		NOTE	AC		NOTE	AD		NOTE
	MIN.	MAX.		MIN.	MAX.		MIN.	MAX.		MIN.	MAX.	
A	---	5.08		3.94	5.08		3.94	5.08		3.05	4.06	
A ₁	.51	---		.51	1.27		.51	1.27		.51	1.65	
B	.381	.584		.356	.508		.356	.508		.356	.508	
B ₁	.77	1.77		1.27	1.65		.89	1.65		1.27	1.65	
C	.204	.381		.204	.304		.204	.304		.204	.304	
D	16.8	19.9		18.93	19.55		18.93	19.93		18.93	19.55	
E ₁	---	8.25	8	7.62	8.25	8	7.62	8.25	8	7.62	8.25	3
	5.59	7.11		6.10	6.60		6.10	6.60		6.10	6.60	
e_1	2.54 TP		3,4	2.54 TP		3,4	2.54 TP		3,4	2.54 TP		3,4
e_A	7.62 TP		3,4	7.62 TP		3,4	7.62 TP		3,4	7.62 TP		3,4
L	2.54	---		3.18	3.81		3.18	3.81		3.18	3.81	
L ₂	.00	.76		.00	.76		.00	.76		.00	.76	
α	0°	15°	5	0°	15°	5	0°	15°	5	0°	15°	5
N	14		6	14		6	16		5	14		5
N ₁	0	---	7	0	---	7	0	---	7	0	---	7
Q ₁	---	---		1.02	1.90		1.02	1.90		1.27	2.15	
S	---	---		1.68	2.28		.39	1.52		1.66	2.28	
NOTE	1,2,10			1,2,10			1,2,10			1,2,10		
REF.	TO-116											
ISSUE	B Oct. 1969			A Oct. 1969			A Oct. 1969			A Oct. 1969		
JEDEC SOLID STATE PRODUCTS OUTLINES			TITLE DUAL IN LINE (DIP) FAMILY 7.62 Row Spacing				ISSUE D		DATE 6/1/76		MO-001 AA-AD	

NOTES:

1. Refer to applicable symbol list.
2. Dimensioning and tolerancing per ANSI Y14.5-1973.
3. Leads within .005 radius of True Position (TP) at gauge plane with maximum material condition and unit installed.
4. e_1 and e_A applies in zone L_2 when unit installed.
5. α applies to spread leads prior to installation.
6. N is the maximum quantity of lead positions.
7. N_1 is the allowable quantity of missing leads.
8. E_1 does not include mold flash.
9. Outlines on which the seating plane is coincident with the base plane ($A_1 = 0$) terminal lead stand-offs are not required, and B_1 may equal B along any part of the lead above the seating/base plane.
10. Controlling Dimension: INCH



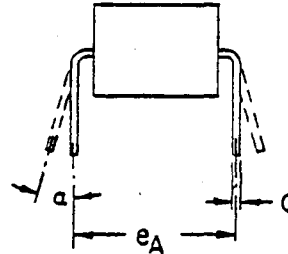
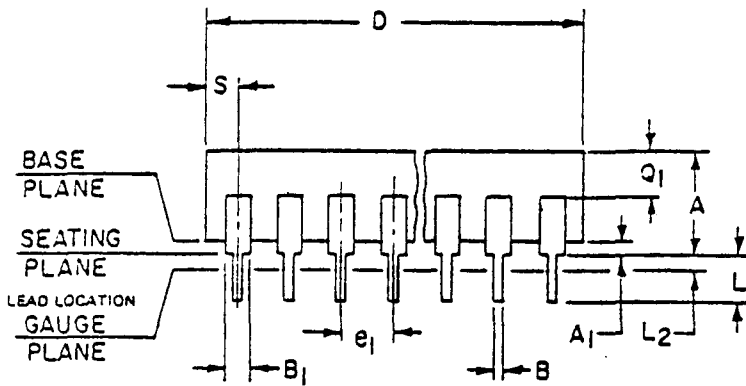
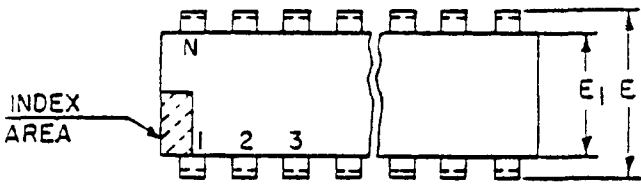
VARIATIONS (ALL DIMENSIONS IN INCHES)

SYMBOL	AA		NOTE	AB		NOTE	AC		NOTE	AD		NOTE
	MIN.	MAX.		MIN.	MAX.		MIN.	MAX.		MIN.	MAX.	
A	----	.200		.155	.200		.155	.200		.120	.160	
A ₁	.020	----		.020	.050		.020	.050		.020	.065	
B	.015	.023		.014	.020		.014	.020		.014	.020	
B ₁	.030	.070		.050	.065		.035	.065		.050	.065	
C	.008	.015		.008	.012		.008	.012		.008	.012	
D	.660	.785		.745	.770		.745	.785		.745	.770	
E	----	.325		.300	.325		.300	.325		.300	.325	
E ₁	.220	.280	8	.240	.260	8	.240	.260	8	.240	.260	8
e ₁	.100 TP		3,4	.100 TP		3,4	.100 TP		3,4	.100 TP		3,4
e _A	.300 TP			.300 TP			.300 TP			.300 TP		
L	.100	----		.125	.150		.125	.150		.125	.150	
L ₂	.000	.030		.000	.030		.000	.030		.000	.030	
α	0°	15°	5	0°	15°	5	0°	15°	5	0°	15°	5
N	14		6	14		5	16		6	14		6
N ₁	0		7	0		7	0		7	0		7
Q ₁	----	----		.040	.075		.040	.075		.050	.085	
S	----	----		.065	.090		.015	.060		.065	.090	
NOTE	1,2,10			1,2,10			1,2,10			1,2,10		
REF.	TO-116											
ISSUE	B Oct. 1969			A Oct. 1969			A Oct. 1969			A Oct. 1969		

JEDEC SOLID STATE PRODUCTS OUTLINES	TITLE DUAL IN LINE (DIP) FAMILY .300 Row Spacing	ISSUE D	DATE 6/1/76	MO-001 AA-AD
--	---	-------------------	-----------------------	---------------------

NOTES :

1. Refer to applicable symbol list.
2. Dimensioning and tolerancing per ANSI Y14.5-1973.
3. Leads within .127 radius of True Position (TP) at gauge plane with maximum material condition and unit installed.
4. e_1 and e_A applies in zone L_2 when unit installed.
5. α applies to spread leads prior to installation.
6. N is the maximum quantity of lead positions.
7. N_1 is the allowable quantity of missing leads.
8. E_1 does not include mold flash.
9. Outlines on which the seating plane is coincident with the base plane ($A_1 = 0$) terminal lead stand-offs are not required, and B_1 may equal B along any part of the lead above the seating/base plane.
10. Controlling Dimension: INCH

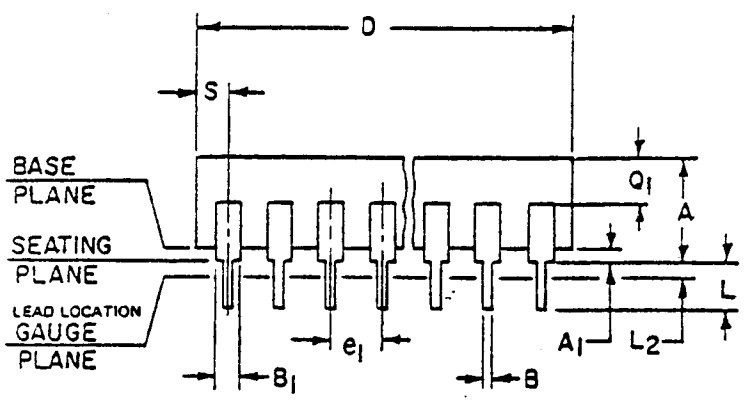
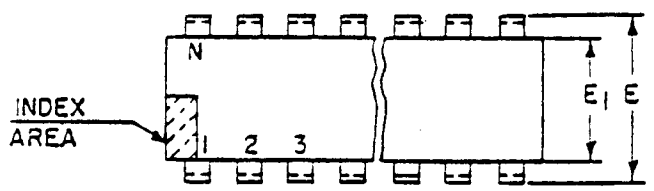


VARIATIONS (ALL DIMENSIONS IN MILLIMETERS)

SYMBOL	AE		NOTE	AF		NOTE	AG		NOTE	AH		NOTE
	MIN.	MAX.		MIN.	MAX.		MIN.	MAX.		MIN.	MAX.	
	A	3.05		4.06			4.20	5.33			4.20	
A ₁	.51	1.65		.39	1.14		.39	1.14		.39	1.01	
B	.356	.508		.381	.508		.381	.508		.356	.508	
B ₁	.89	1.65		1.15	1.77		1.15	1.77		1.12	1.77	
C	.204	.304		.229	.279		.229	.279		.204	.304	
D	18.93	19.93		19.05	20.19		19.05	20.19		18.55	19.55	
E	7.62	8.25		7.50	8.25		7.50	8.25		7.37	8.12	
E ₁	6.10	6.60	8	6.23	7.62	8	6.23	7.62	8	6.10	6.60	8
e ₁	2.54 TP		3,4	2.54 TP		3,4	2.54 TP		3,4	2.54 TP		3,4
e _A	7.62 TP		3,4	7.62 TP		3,4	7.62 TP		3,4	7.62 TP		3,4
L	3.18	3.81		3.05	4.06		3.05	4.06		2.93	3.93	
L ₂	.00	.76		.00	.76		.00	.76		.00	.76	
α	0°	15°	5	2°	15°	5	2°	15°	5	0°	15°	5
N	16		6	14		6	16		6	14		5
N ₁	1.27	0	7	1.27	0	7	1.27	0	7	1.27	0	7
Q ₁	2.15			2.03			2.03			2.15		
S	.39	1.52		1.27	2.79		.26	1.52		1.40	2.41	

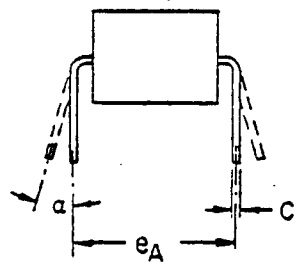
NOTE	1,2,10	1,2,10	1,2,10	1,2,10
REF.				
ISSUE	A Oct. 1969	A May 1969	A May 1969	D JUNE 1976

JEDEC SOLID STATE PRODUCTS OUTLINES	TITLE DUAL IN LINE (DIP) FAMILY 7.62 Row Spacing	ISSUE D	DATE 6/1/76	MO-001 AE-AH
---	--	------------	----------------	--------------



NOTES:

1. Refer to applicable symbol list.
2. Dimensioning and tolerancing per ANSI Y14.5-1973.
3. Leads within .006 radius of True Position (TP) at gauge plane with maximum material condition and unit installed.
4. e_1 and e_A applies in zone L_2 when unit installed.
5. α applies to spread leads prior to installation.
6. N is the maximum quantity of lead positions.
7. N_1 is the allowable quantity of missing leads.
8. E_1 does not include mold flash.
9. Outlines on which the seating plane is coincident with the base plane ($A_1 = 0$) terminal lead stand-offs are not required, and B_1 may equal B along any part of the lead above the seating/base plane.
10. Controlling Dimension: INCH



VARIATIONS (ALL DIMENSIONS IN INCHES)

SYMBOL	AE		NOTE	AF		NOTE	AG		NOTE	AH		NOTE
	MIN.	MAX.		MIN.	MAX.		MIN.	MAX.		MIN.	MAX.	
	A	.120		.160			.165	.210			.165	
A_1	.020	.065		.015	.045		.015	.045		.015	.040	
B	.014	.020		.015	.020		.015	.020		.014	.020	
B_1	.035	.065		.045	.070		.045	.070		.044	.070	
C	.008	.012		.009	.011		.009	.011		.008	.012	
D	.745	.785		.750	.795		.750	.795		.730	.770	
E	.300	.325	8	.295	.325	8	.295	.325	8	.290	.320	8
E_1	.240	.260		.245	.300		.245	.300		.240	.260	
e_1	.100 TP		3,4	.100 TP		3,4	.100 TP		3,4	.100 TP		3,4
e_A	.300 TP		3,4	.300 TP		3,4	.300 TP		3,4	.300 TP		3,4
L	.125	.150		.120	.160		.120	.160		.115	.155	
L_2	.000	.030		.000	.030		.000	.030		.000	.030	
α	0°	15°	5	2°	15°	5	2°	15°	5	0°	15°	5
N	16		6	14		6	16		6	14		6
N_1	0		7	0		7	0		7	0		7
Q_1	.050	.085		.050	.080		.050	.080		.050	.085	
S	.015	.060		.050	.110		.010	.060		.055	.095	

NOTE	1,2,10	1,2,10	1,2,10	1,2,10
REF.				
ISSUE	A Oct. 1969	A May 1970	A May 1970	D JUNE 1976

JEDEC SOLID STATE PRODUCTS OUTLINES	TITLE DUAL IN LINE (DIP) FAMILY .300 Row Spacing	ISSUE D	DATE 6/1/76	MO-001 AE-AH
---	--	------------	----------------	--------------