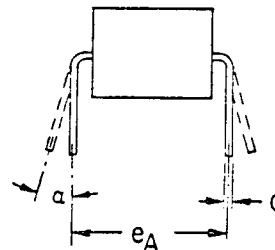
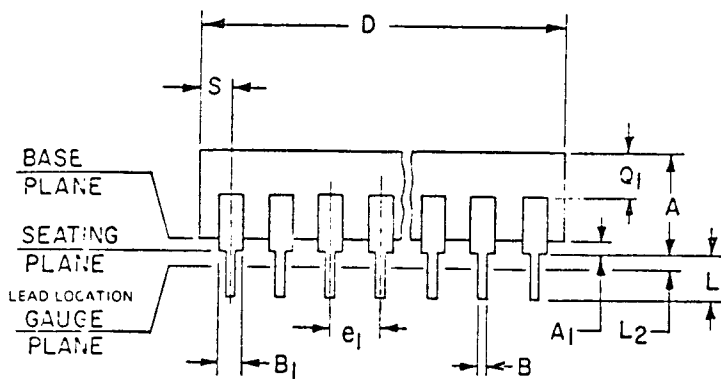
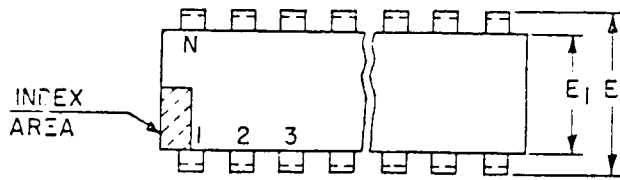


NOTES:

1. Refer to applicable symbol list.
2. Dimensioning and tolerancing per ANSI Y14.5-1973.
3. Leads within .127 radius of True Position (TP) at gauge plane with maximum material condition and unit installed.
4. e_1 and e_A applies in zone L_2 when unit installed.
5. α applies to spread leads prior to installation.
6. N is the maximum quantity of lead positions.
7. N_1 is the allowable quantity of missing leads.
8. E_1 does not include mold flash.
9. Outlines on which the seating plane is coincident with the base plane ($A_1 = 0$) terminal lead stand-offs are not required, and B_1 may equal B along any part of the lead above the seating/base plane.
10. Controlling Dimension: INCH



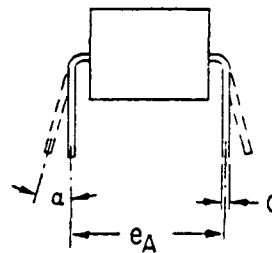
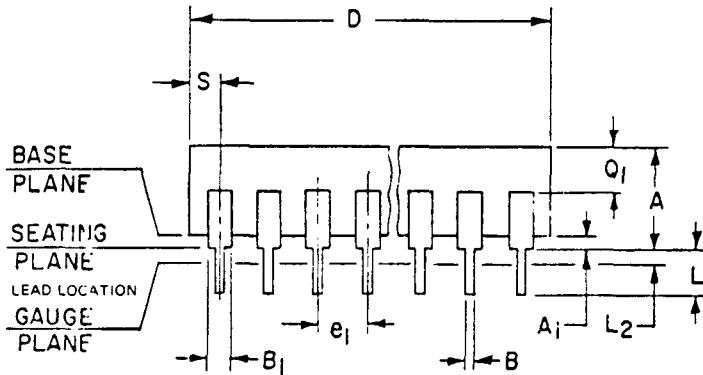
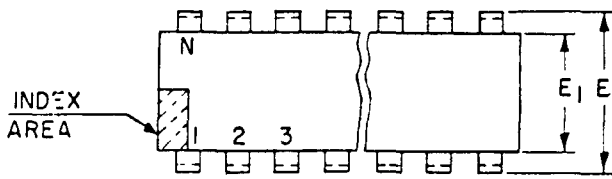
VARIATIONS (ALL DIMENSIONS IN MILLIMETERS)

SYMBOL	AN		NOTE	AP		NOTE	MIN.	MAX.	NOTE	MIN.	MAX.	NOTE
	MIN.	MAX.		MIN.	MAX.							
A	3.94	5.08		2.3	5.3							
A ₁	0.51	1.27		.39	1.77							
B	0.356	0.508		.407	.508							
B ₁	1.14	1.65		1.15	1.77							
C	0.204	0.304		.229	.330							
D	9.40	10.92		18.93	21.33							
E	7.62	8.25		7.62	8.25							
E ₁	6.10	6.60	8	6.10	7.11	8						
e ₁	2.54 TP		3.4	2.54 BSC		3.4						
e _A	7.62 TP		3.4	7.62 BSC		3.4						
L	3.18	3.81		2.93	3.81							
L ₂	0	0.762		.00	1.27							
α	0	15°	5	0	15°	5						
N	8		6	16		6						
N ₁	0		7	0		7						
Q ₁	1.02	1.90		1.27	2.15							
S	0.39	1.52		.26	1.77							
NOTE	1.2.10			1.2.10								
REF.	11.3-70			11.3-88								
ISSUE	APRIL 1977			OCTOBER 1980								

JEDEC SOLID STATE PRODUCT OUTLINES	TITLE DUAL IN LINE FAMILY 7.62 ROW SPACING	ISSUE B	DATE Oct. 1980	MO-001 AN-AP
--	--	------------	-------------------	--------------

NOTES:

1. Refer to applicable symbol list.
2. Dimensioning and tolerancing per ANSI Y14.5-1973.
3. Leads within .005 radius of True Position (TP) at gauge plane with maximum material condition and unit installed.
4. e_1 and e_A applies in zone L_2 when unit installed.
5. α applies to spread leads prior to installation.
6. N is the maximum quantity of lead positions.
7. N_1 is the allowable quantity of missing leads.
8. E_1 does not include mold flash.
9. Outlines on which the seating plane is coincident with the base plane ($A_1 = 0$) terminal lead stand-offs are not required, and B_1 may equal B along any part of the lead above the seating/base plane.
10. Controlling Dimension: INCH



VARIATIONS (ALL DIMENSIONS IN INCHES)

SYMBOL	AN		NOTE	AP		NOTE	MIN.	MAX.	NOTE	MIN.	MAX.	NOTE
	MIN.	MAX.		MIN.	MAX.							
A	0.155	0.200		.090	.210							
A ₁	0.020	0.050		.015	.070							
B	0.014	0.020		.016	.020							
B ₁	0.045	0.065		.045	.070							
C	0.008	0.012		.009	.013							
D	0.370	0.430		.745	.840							
E	0.300	0.325		.300	.325							
E ₁	0.240	0.260	8	.240	.280	8						
e ₁	0.100 TP		3.4	.100 BSC		3.4						
e _A	0.300 TP		3.4	.300 BSC		3.4						
L	0.125	0.150		.115	.150							
L ₂	0	0.030		.000	.050							
α	0	15°	5	0	15°	5						
N	8		6	16		6						
N ₁	0		7	0		7						
Q ₁	0.040	0.075		.050	.085							
S	0.015	0.060		.010	.070							
NOTE	1,2,10			1,2,10								
REF.	11.3-70			11.3-88								
ISSUE	APRIL 1977			OCTOBER 1980								

JEDEC SOLID STATE PRODUCT OUTLINES	TITLE DUAL IN LINE FAMILY 0.300 ROW SPACING	ISSUE B	DATE Oct. 1980	MO-001 AN-AP
--	---	------------	-------------------	--------------