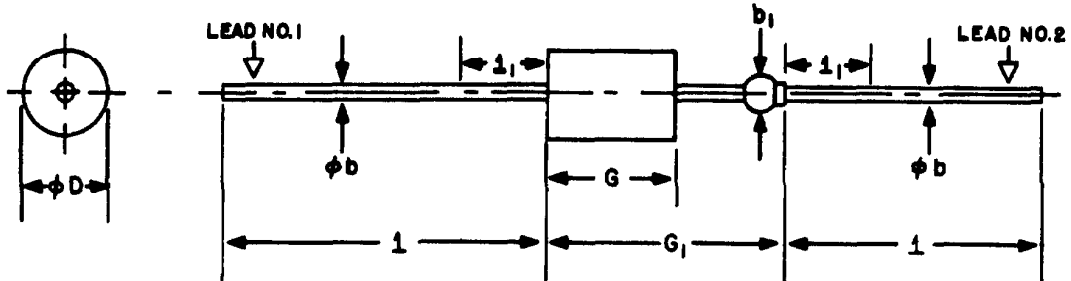


DO-13



| SYMBOL | INCHES | | MILLIMETERS | | NOTES |
|----------|--------|-------|-------------|-------|-------|
| | MIN. | MAX. | MIN. | MAX. | |
| ϕb | .025 | .035 | .64 | .89 | |
| b_1 | .045 | .100 | 1.14 | 2.54 | 3 |
| ϕD | .215 | .235 | 5.46 | 5.97 | 1 |
| G | .293 | .357 | 7.44 | 9.07 | |
| G_1 | | .570 | | 14.48 | |
| l | 1.000 | 1.625 | 25.40 | 41.28 | |
| l_1 | | .188 | | 4.78 | 2 |

NOTES:

1. THE MAJOR DIAMETER IS ESSENTIALLY CONSTANT ALONG ITS LENGTH.
2. WITHIN THIS ZONE DIAMETER MAY VARY TO ALLOW FOR LEAD FINISHES AND IRREGULARITIES.
3. DIMENSION TO ALLOW FOR PINCH OR SEAL DEFORMATION ANYWHERE ALONG TUBULATION.