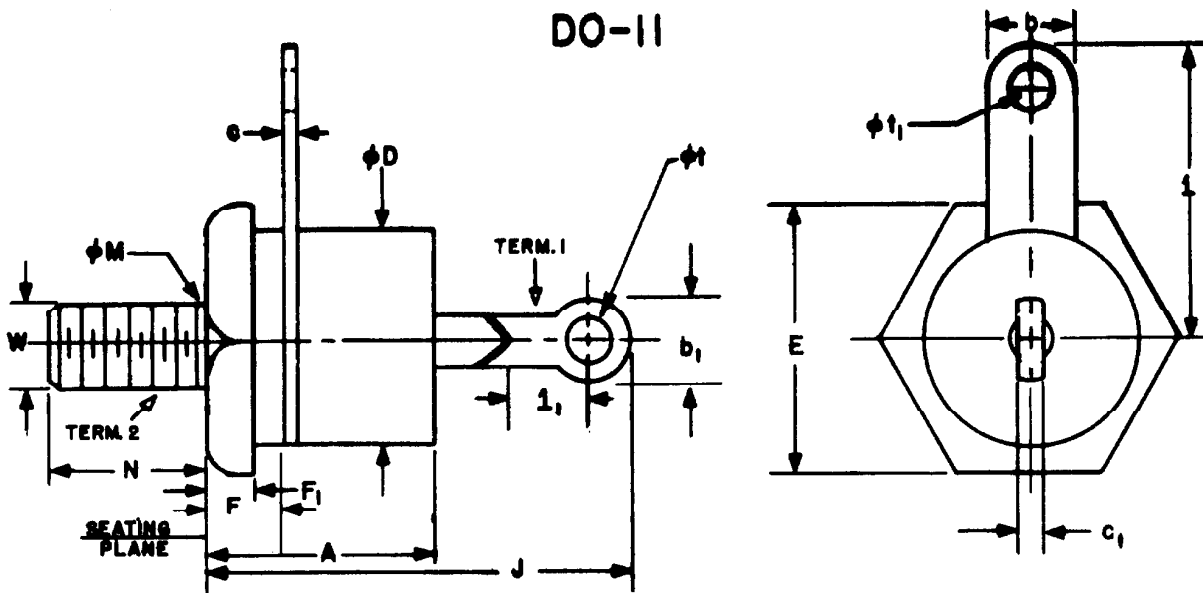


DO-11



SYMBOL	INCHES		MILLIMETERS		NOTES
	MIN.	MAX.	MIN.	MAX.	
A		.640		16.26	
b	.235	.265	5.97	6.73	
b ₁		.375		9.53	2
c	.020	.038	.51	.97	
c ₁		.080		2.03	
∅D		.667		16.94	
E	.667	.687	16.94	17.45	
F	.135	.230	3.43	5.84	
F ₁	.090		2.29		
J		1.125		28.58	
l	.875	1.125	22.23	28.58	
l	.156		3.96		4
∅M	.220	.249	5.59	6.32	1
N	.422	.453	10.72	11.51	
∅t	.140	.175	3.56	4.45	
∅t ₁	.140		3.56		
W					3

NOTES:

1. COMPLETE THREADS TO EXTEND TO WITHIN 2-1/2 THREADS OF SEATING PLANE.
2. ANGULAR ORIENTATION OF TERMINALS IS UNDEFINED. SQUARE OR RADIUS ON ENDS OF TERMINALS IS OPTIONAL.
3. 1/4-28 UNF-2A. MAXIMUM PITCH DIAMETER OF PLATED THREADS SHALL BE BASIC PITCH DIAMETER (.2268, 5.76 MM) REFERENCE (SCREW THREAD STANDARDS FOR FEDERAL SERVICES 1957) HANDBOOK H28 1957 P1.
4. MINIMUM FLAT.