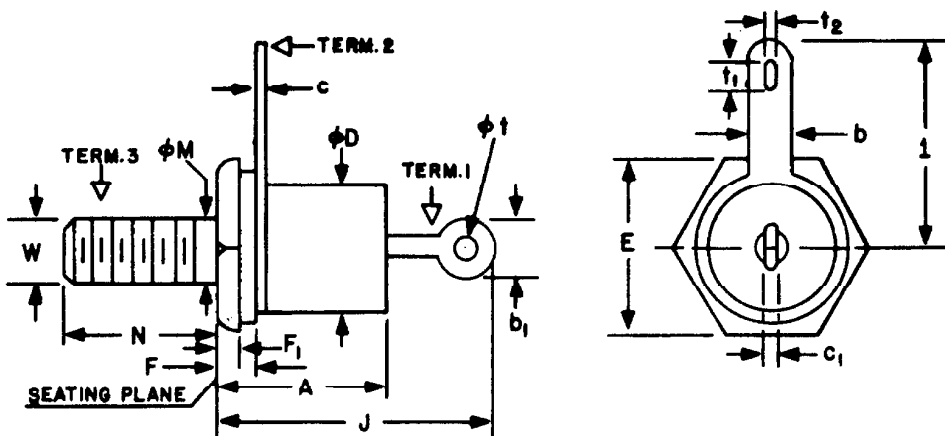


# DO-10



SYMBOL	INCHES		MILLIMETERS		NOTES
	MIN.	MAX.	MIN.	MAX.	
A		.550		13.97	
b	.110	.140	2.79	3.56	
$b_1$		.250		6.35	2
c	.020	.038	.51	.97	
$c_1$		.050		1.27	2
$\phi D$		.487		12.37	
E	.487	.500	12.37	12.70	
F	.085	.160	2.16	4.06	
$F_1$	.040		1.02		
J		.950		24.13	
l	.750	.875	19.05	22.23	
$\phi M$	.163	.189	4.14	4.80	1
N	.422	.453	10.72	11.51	
$\phi t$	.060		1.52		
$t_1$	.110	.140	2.79	3.56	
$t_2$	.055	.075	1.40	1.91	
W					3

**NOTES:**

1. COMPLETE THREADS TO EXTEND TO WITHIN 2-1/2 THREADS OF SEATING PLANE.
2. ANGULAR ORIENTATION OF TERMINALS IS UNDEFINED. SQUARE OR RADIUS ON ENDS OF TERMINALS IS OPTIONAL.
3. 10-32 UNF-2A. MAXIMUM PITCH DIAMETER OF PLATED THREADS SHALL BE BASIC PITCH DIAMETER (.1697", 4.29 MM) REFERENCE (SCREW THREAD STANDARDS FOR FEDERAL SERVICES 1957) HANDBOOK H28 1957 P1.