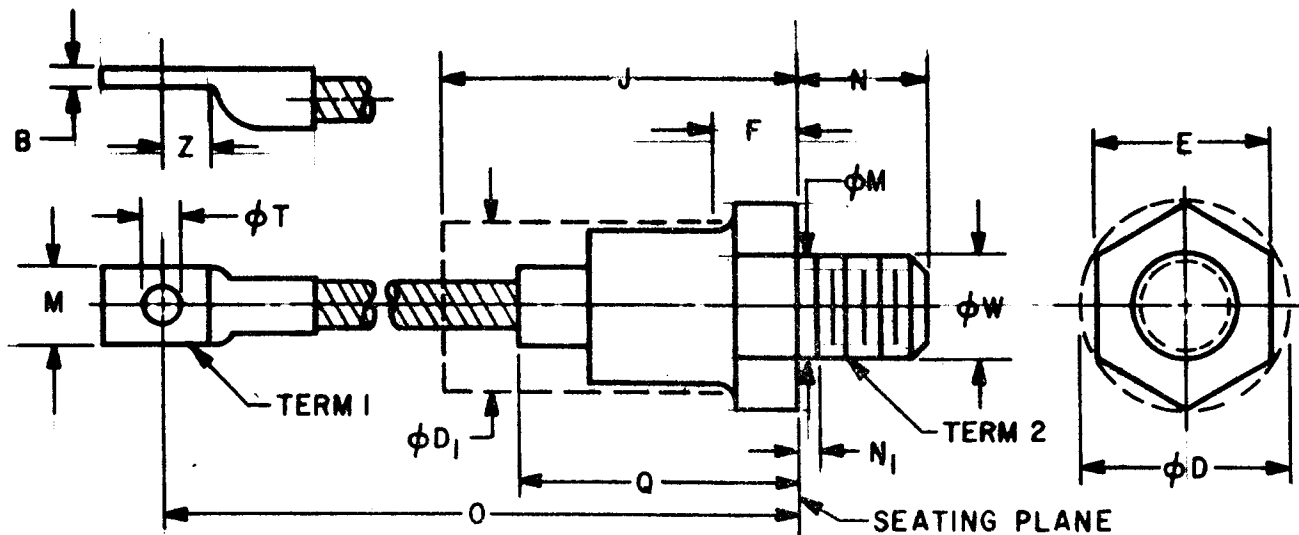


DO-9



MILLIMETER DIMENSIONS ARE DERIVED FROM ORIGINAL INCH DIMENSIONS

SYMBOL	INCHES		MILLIMETERS		NOTES	ISSUE	
	MIN.	MAX.	MIN.	MAX.			
B	.063	.172	1.7	4.3	-	A	RELEASE 2987
phi D	-	1.443	-	36.65	-	B	RELEASE 2987B
phi D1	-	1.218	-	30.93	1		
E	1.212	1.250	30.79	31.75	-		
F	.250	.630	6.4	16.0	5		
J	-	3.250	-	82.55	1, 7		
M	.530	.755	13.5	19.1	2		
phi M	.660	.749	16.77	19.02	3		
N	.793	.828	20.15	21.03	-		
N1	-	.156	-	3.96	3		
O	5.000	6.000	127.	152.	-		
Q	-	2.250	-	57.15	-		
phi T	.265	.350	6.74	8.89	-		
phi W	.7029	.7094	17.854	18.018	4		
Z	.375	-	9.53	-	6		

NOTES:

1. THE DEVICE WITH EXCEPTION OF THE HEXAGON, THREAD, AND FLEXIBLE LEAD EXTENSION LIES WITHIN THE CYLINDER DEFINED BY phi D1 AND LENGTH J.
2. ANGULAR ORIENTATION OF TERMINAL WITH RESPECT TO HEXAGONAL PORTION IS UNDEFINED. SQUARE OR RADIUS ON END OF TERMINAL IS OPTIONAL.
3. LENGTH OF INCOMPLETE OR UNDERCUT THREADS OF phi M.
4. PITCH DIAMETER OF 3/4-16 UNF-2A (COATED) THREADS (ASA B1.1-1960).
5. A CHAMFER (OR UNDERCUT) ON ONE OR BOTH ENDS OF THE HEXAGONAL PORTION IS OPTIONAL.
6. MINIMUM FLAT.
7. SEATED HEIGHT WITH LEAD BENT AT RIGHT ANGLE.