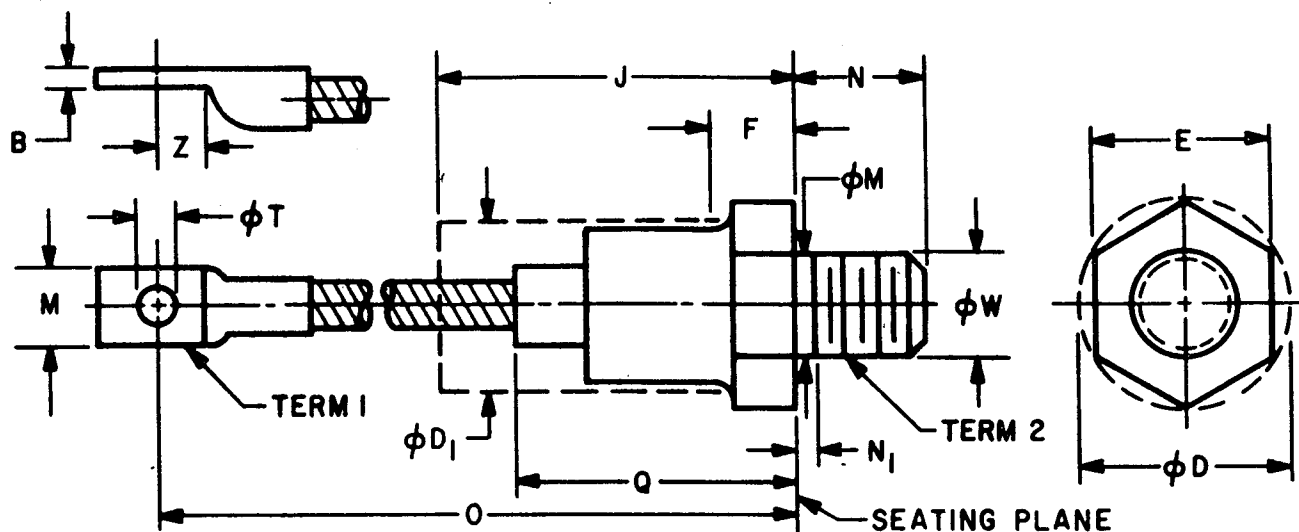


DO-8



MILLIMETER DIMENSIONS ARE DERIVED FROM ORIGINAL INCH DIMENSIONS

SYMBOL	INCHES		MILLIMETERS		NOTES	ISSUE
	MIN.	MAX.	MIN.	MAX.		
B	.050	.100	1.27	2.54	-	A RELEASE NO. 2759A
ϕD	-	1.227	-	31.16	-	B RELEASE NO. 2759B
ϕD_1	-	1.063	-	27.00	1	
E	1.031	1.063	26.19	27.00	-	
F	.125	.500	3.18	12.70	5	
J	-	2.500	-	63.50	1, 7	
M	.437	.650	11.10	16.51	2	
ϕM	.344	.373	8.74	9.47	3	
N	.605	.645	15.37	16.38	-	
N_1	-	.105	-	2.66	3	
O	3.875	4.625	98.43	117.47	-	
Q	-	1.675	-	42.54	-	
ϕT	.250	.310	6.35	7.87	-	
ϕW	.3450	.3479	8.763	8.836	4	
Z	.300	-	7.62	-	6	

NOTES:

1. THE DEVICE WITH EXCEPTION OF THE HEXAGON, THREAD, AND FLEXIBLE LEAD EXTENSION LIES WITHIN THE CYLINDER DEFINED BY ϕD_1 AND LENGTH J.
2. ANGULAR ORIENTATION OF TERMINAL WITH RESPECT TO HEXAGONAL PORTION IS UNDEFINED. SQUARE OR RADIUS ON END OF TERMINAL IS OPTIONAL.
3. LENGTH OF INCOMPLETE OR UNDERCUT THREADS OF ϕM .
4. PITCH DIAMETER OF 3/8-24 UNF-2A (COATED) THREADS (ASA B1.1-1960).
5. A CHAMFER (OR UNDERCUT) ON ONE OR BOTH ENDS OF THE HEXAGONAL PORTION IS OPTIONAL.
6. MINIMUM FLAT.
7. SEATED HEIGHT WITH LEAD BENT AT RIGHT ANGLE.