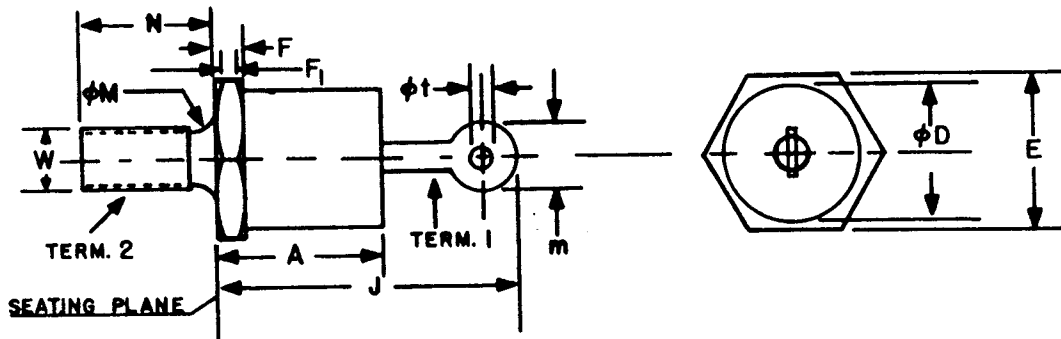


# DO-4



SYMBOL	INCHES		MILLIMETERS		NOTES
	MIN.	MAX.	MIN.	MAX.	
A		.405		10.29	
ØD		.424		10.77	
E	.424	.437	10.77	11.10	
F	.075	.175	1.91	4.45	
F <sub>1</sub>	.060		1.52		
J		.800		20.32	
ØM	.163	.189	4.14	4.80	1
m		.250		6.35	2
N	.422	.453	10.72	11.51	
Øt	.060		1.52		
W					3

**NOTES :**

1. COMPLETE THREADS TO EXTEND TO WITHIN 2-1/2 THREADS OF SEATING PLANE.
2. ANGULAR ORIENTATION OF THIS TERMINAL IS UNDEFINED.
3. 10-32 UNF-2A MAXIMUM PITCH DIAMETER OF PLATED THREADS SHALL BE BASIC PITCH DIAMETER (.1697", 4.29 MM) REF. (SCREW THREAD STANDARDS FOR FEDERAL SERVICES 1957) HANDBOOK H28 P1.